



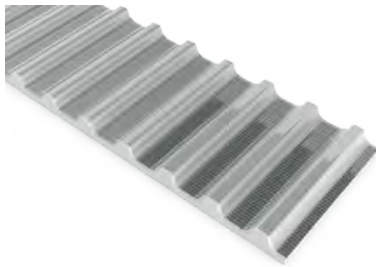
GATES POLYURETHANE TIMING BELTS

WR10 - FOR USE IN HIGH HUMIDITY ENVIRONMENT

Gates WR10 timing belts are designed for applications in high humidity environment and have an optimized tooth shape for an outstanding meshing behavior when they are used together with standard T10 pulleys. For each technical requirement, we offer the suitable WR10 construction.

FEATURES

- Completely sealed, no flights
- Optimized tooth shape for standard T10-pulleys



NEW!

PRODUCT DATA

Pitch	10 mm		
Minimum Welded Belt Length	No welding		
Standard Roll Length (Tolerance ± 1%)	100 m		
Standard Colour	White		
Cord	Steel Cord	(WR10)	
	High Flexible Steel Cord	(WR10-HF)	
	Aramid	(WR10-Aramid)	
Minimum Number of Pulley Teeth z_{min}	14	(Steel/Aramid)	/ 12 (HF-Steel)
Minimum Pulley Diameter	44,56 mm	(Steel/Aramid)	/ 38,20 mm (HF-Steel)
Minimum Back Bend Diameter	80 mm	(Steel/Aramid)	/ 60 mm (HF-Steel)
FDA / EU Approval	Yes (Aramid)		
Polyurethane	R1 / 92 Shore A (STANDARD) R2 / 85 Shore A (OPTIONAL)		
Polyamide Fabric	No		

TECHNICAL DATA

Standard Width [mm]	12	16	25	32	40	50	75	100	150
Ultimate Tensile Strength F_{Break} [N] Average Value									
Steel	2.940	4.200	7.140	9.240	11.340	14.700	22.260	29.820	44.940
HF-Steel	4.340	6.200	10.540	13.640	16.740	21.700	32.860	44.020	66.340
Aramid	3.234	4.851	8.085	10.241	12.936	16.709	25.333	33.957	51.205
Allowable Belt Tension F_{tall} [N] Open Ended									
Steel	786	1.123	1.909	2.470	3.031	3.929	5.950	7.971	12.012
HF-Steel	964	1.376	2.340	3.028	3.716	4.818	7.295	9.773	14.728
Aramid	425	638	1.064	1.347	1.702	2.198	3.332	4.467	6.736
Allowable Effective Tension F_{eall} [N] Minimum 15 Teeth are in mesh									
	811	1.082	1.690	2.163	2.704	3.380	5.070	6.760	10.140
Specific Belt Stiffness c_{sp} [N]									
Steel	196.463	280.662	477.125	617.456	757.787	982.316	1.487.50	1.992.69	3.003.08
HF-Steel	240.882	344.118	585.000	757.059	929.118	1.204.41	1.823.82	2.443.23	3.682.05
Aramid	106.350	159.525	265.875	336.775	425.400	549.475	833.075	1.116.67	1.683.87